



PARQCOLOR® COMMERCIAL FLOORING by ABET Inc.

high pressure laminate flooring

TECHNICAL BRIEF

800-228-2238

www.abetlaminati.com

TABLE OF CONTENTS

Preface	2
Maintenance	2
Glue Application, Curing, Removal	3
Expansion & Contraction	3-5
Climate Conditions	6
Subfloor Preparation	6
Subfloor Moisture “Hydrostatic Pressure”	6
Wood Subfloor	7
Stair Treads	7
Problem Solving	8-9
Technical Data	9
Specification	10
Specification CSI format	11-13
Accessories for Flooring System	14-18
(moldings, underlayment & adhesive)	
Warranty	19



Preface:

Parqcolor is a High Pressure Laminate Plank Flooring System engineered for commercial applications. It sustains intense foot traffic, resists heavy impact loads and almost any staining or chemical agent. Parqcolor Flooring System is designed for floated installation methods. **Parqcolor is a true no maintenance flooring option.**

ABET offers other unique floorings such as Parqwood with natural wood veneers, Parqcolor Fiber, using natural wood veneers or natural jute fibers, Parqcolor Vintage, with rustic selections and six foot plank lengths, and Parqcolor Chromatic, a solid color collection. All have a 10-year Commercial and Lifetime Residential warranty against staining, fading¹ and wear.

Parqcolor High Pressure Laminate Flooring Systems produced by PL, a subsidiary of ABET GROUP, offers distinct benefits to commercial and residential customers alike. It is wise, however to contact an ABET representative to be certain that Parqcolor is right for your project. This technical brief is both a reiteration of information provided within Parqcolor literature and additional information based on installation experience in North America.

As in any product, the success ultimately depends on the environment in which the product is installed, and the installation process itself. ABET cannot stress enough, the importance of proper installation knowledge and preparation. It is vital to assess each installation situation independently, understanding potential problems associated with the buildup and movement of humidity or moisture within the building and from the subfloor.

ABET can offer instruction and advice to all parties involved in the purchase and installation of Parqcolor flooring products. Contact your local ABET representative by calling 1-800-228-2238.

Maintenance:

One of the best features of laminate flooring is the lack of maintenance required to keep a beautiful and clean floor. Primarily, sweeping and vacuuming, with occasional damp mopping with an ammonia or vinegar and water mixture will be necessary. Difficult to remove stains can be cleaned with either acetone or isopropyl alcohol.

Ammonia and water mixture: ½ cup of Ammonia to 1 gallon of water (approx. a 3% mix)

Vinegar and water mixture: 1 cup of Vinegar to 1 gallon of water (approx. a 5% mix)

NEVER use abrasive cleaning pads or agents, as this will alter the finish of the floor. Do not use excess water to clean Parqcolor, as this can damage the product over time. Some cleaning agents such as “Murphy’s Oil” or bleach will leave a residue, affecting the appearance of the floor.

DO NOT WAX or polish Parqcolor, as this will appear similar to a grease residue on a laminate countertop. Wax residue may be removed with either acetone or isopropyl alcohol.

DO NOT use toilet cleaner, drain cleaner, oven cleaners, acids or strong alkali chemicals.

DO NOT use mechanical floor cleaners.

¹Warranty does not include “Fade” for Parqwood, due to effects of UV on natural wood veneers.

Glue Application, Curing, Removal, and Residue Cleanup:

Application:

Sufficient adhesive is one of the most crucial requirements to successful laminate flooring installations. The best sign that sufficient adhesive has been introduced into the groove is that some excess overflows onto the surface of the seam.

Glue must be evenly applied into the long and short groove. Viewing a cross section of the groove the adhesive would fill 55 to 65% of the valley. The plank must be fitted quickly after glue is placed in the groove, or the adhesive properties will weaken.

Curing:

Parqcolor adhesive requires 6 to 12 hours to cure. It is vital that the glue bond remains undisturbed for at least 12 hours. Disturbing the glue's curing process diminishes its ability to bond the planks together. Do not walk on the flooring during installation, or for at least 12 hours after the installation is completed.

Removal:

Glue residue is a common complaint among customers. Residue cleanup is time consuming and can be avoided with proper removal techniques. A successful technique requires a 10 to 20 minute dry time of the excess adhesive sitting on top of the seam. After which time, the water-based adhesive loses moisture and coagulates to itself. A plastic putty knife can then be used to scrape the string of excess glue from the seam. Some moist adhesive will remain on the seam. Use dry disposable towels to wipe the moist remaining adhesive.

Wet glue removal techniques can dilute the water-soluble adhesive, and if not completely removed, will reside and cure in the finish of the floor, requiring time consuming clean up.

Residue Cleanup:

PL, Parqcolor PVA glue can be cleaned from the flooring surface using acetone, or steam.

Expansion & Contraction:

Because High Pressure Laminate and fiber cores are made of natural wood fibers, Parqcolor will expand and contract with changes in humidity. When correctly installed, floated laminate floors expand and contract as a single unit. The movement will occur from the center or the largest concentration of flooring. For this reason, rooms other than rectangular in shape such as "U", "S", or "L" shaped rooms may require a separation via transitional molding. When areas such as perpendicular hallways are attached to each other, problems occur around the points in which the floors join. Areas of floor that become "separate units" must be separated using the "T" transition.

Typically, an expansion space of 5/16"ths between Parqcolor and all fixed points will suffice. This expansion space can be hidden by a variety of matching trim made available by ABET or by alternative materials. ABET strongly recommends limiting continuous installation spans to approximately 30 feet. This will limit the amount of dimensional change due to change in humidity. Larger distances have been completed successfully, however due to the increased dimensional change, expansion space must be increased. Larger installation spans require environments with consistent climate control. Contact your ABET representative for more specific information.

A.

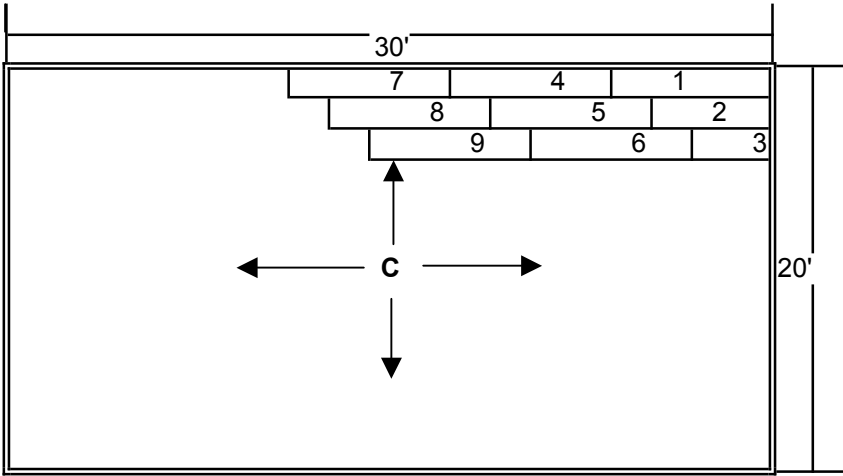


Diagram A. depicts a standard rectangular room. Installations generally start from the right hand corner of the room. A stepped pattern on the first 3 rows aids in creating tight seams and therefore a square installation. The end seams should be staggered at least 6". Strapping these rows is highly recommended. "C" depicts the center point of the room, of which the expansion and contraction will occur.

Maintain a 5/16ths inch expansion space at the walls or any fixed point in the room.

B.

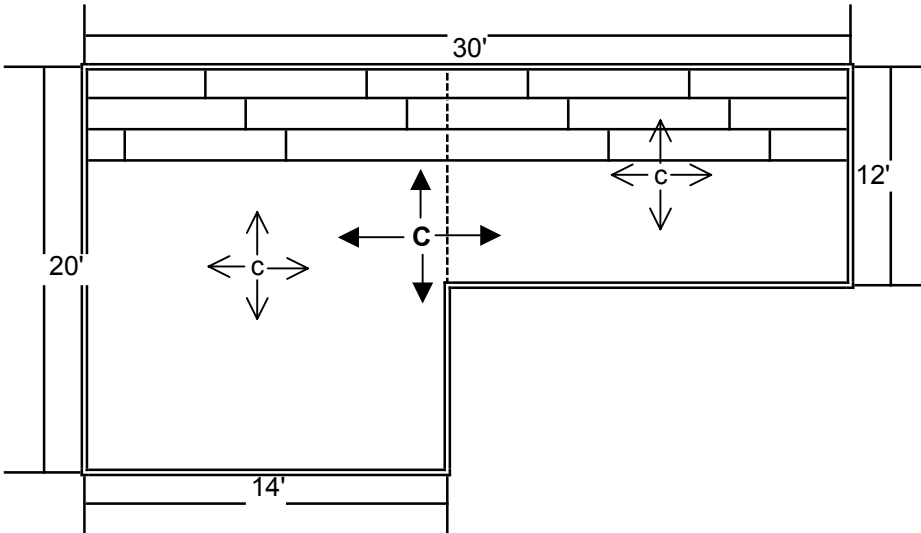


Diagram B. depicts an "L" shaped room. The dotted line establishes an imaginary separation between the two areas, each with an independent center point. Since the overall dimension is within recommended limits, and the connection between the areas is more than half the overall width; the installation could be continuous (without "T" separation). This would result in a center point somewhere between the two imaginary points.

C.

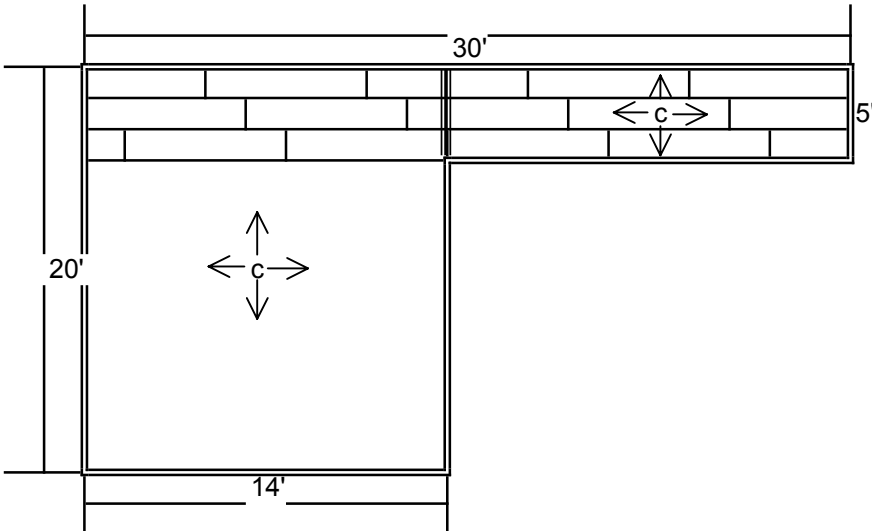
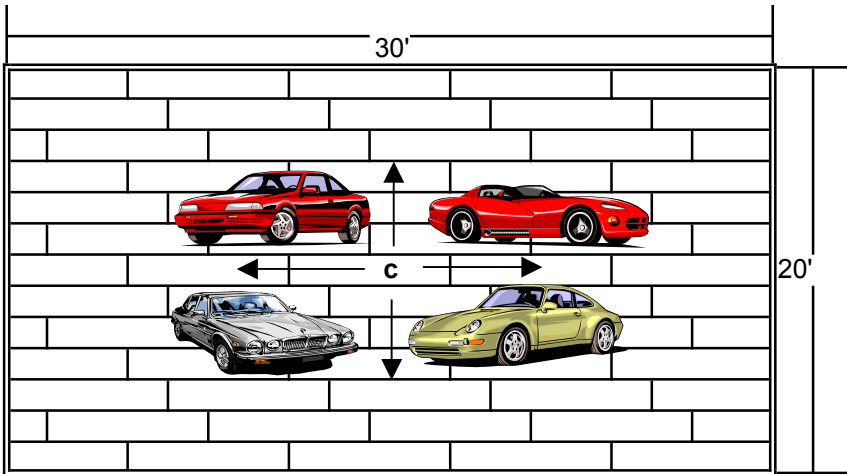


Diagram C. depicts a rectangular room with a hallway connection. Since the center points are too independent of each other, the hallway will require a "T" separation molding. Create the 5/16ths inch expansion space at the "T" molding.

This principal is also necessary at the thresholds separating rooms or rooms from the hallway.

D.

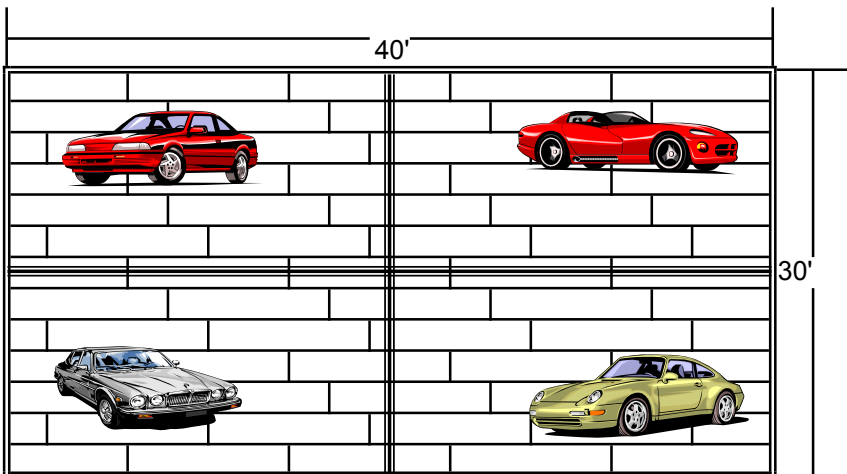


Diagrams D. & E. depict the considerations for heavy objects such as autos, pianos, or large heavily loaded furniture. These heavy objects can alter the floor's point of expansion and contraction.

In diagram D. the autos are closer to the center and will allow the outer areas of the floor (the area with the greatest movement) to move freely.

In diagram E. the floor is slightly larger with the autos toward the far corners of the room, where the most movement of the floor will occur. Therefore this installation will require "T" transitions to separate the autos.

E.



Climate Conditions:

Relative humidity must be kept within 40% to 60% for an effective installation. Parqcolor must acclimatize to the installation environment with its plastic packaging removed for approximately 48 hours. Consideration of typical humidity changes of the installation environment may affect the dimension of the expansion spacing.

Subfloor Preparation:

Parqcolor requires its subfloor to be both flat and dry. Check for deviations in flatness using a 10 foot straight edge. Remove all debris, then fill or remove valleys or peaks of ¼" or greater within a 10 foot span.

Properly test for humidity emitting from the subfloor. This is accomplished using the Calcium Chloride test. A result of 4 pounds or less is recommended for installation. Results of 5 or more have a risk of moisture related problems. A required vapor barrier of polyethylene plastic, with a thickness of at least .4 mm laid on the subfloor, protects Parqcolor from this moisture. The polyethylene must be joined using double sided tape, completing a seamless vapor barrier to the Parqcolor. It is vital to correctly install the proper vapor barrier with high moisture subfloors.

Additionally, a sound absorbing resilient underlayment would be necessary between the vapor barrier and Parqcolor floor. A combination polyethylene plastic and foam underlayment can also be used.

Subfloor Moisture "Hydrostatic Pressure":

High Pressure Laminate consists entirely of resin-impregnated paper. This paper although treated, expands and contracts with changes in moisture or humidity. If there is a drastic increase of moisture beneath the laminate floor, the backing laminate expands and the surface laminate does not, thus creating a "cupped" plank.

This problem most commonly occurs due to flooding or a lack of vapor barrier to the concrete. Although all Parqcolor installations require a vapor barrier, high levels of moisture emitting from the concrete can cause condensation to come in contact with the underside of the plank.

Occasionally, hydrostatic pressure is the cause. "Hydrostatic pressure," is the natural phenomenon of ground-developed moisture from the water table below the subfloor. Although the concrete may test within the acceptable limits of moisture, most tests consider moisture within the concrete. Hydrostatic pressure is moisture that travels through the concrete from the ground below. It can only be tested using procedures such as the "Calcium Chloride" test. However, even with this procedure, Hydrostatic pressure can be random based on the changing water table from either rain, nearby bodies of water, as well as the soils ability to absorb water.

Protection from hydrostatic pressure is obtained by laying plastic vapor barrier on the soil prior to pouring concrete. Some older homes do not include this protection. Settlement of the slab or porous sections of concrete can exacerbate the problem. This condition prevents the success of almost all glue down or cellulosic (wood based) flooring materials. There are various ways to treat slabs with hydrostatic pressure problems. Refer to <http://www.sigfloor.org/info> for additional information or suggestions for addressing the moisture in concrete.

Wood Subfloor:

Wood or Plywood subfloors are susceptible to the buildup of moisture from either floors below or ground developed hydrostatic pressure. The requirement of a vapor barrier beneath the Parqcolor can cause a buildup of moisture in the wood subfloor. This buildup can warp or rot the subfloor causing permanent damage. It is vital to assess each installation situation independently, understanding potential problems associated with the buildup and movement of humidity within the building.

Sundry Materials:

ABET inventories a host of materials to complete a finished installation. Trim moldings such as Transitional, Reducer, End Cap, Quarter Rounds, and Stair Nosing, are stocked in laminated HDF to match the decors. Brushed Aluminum, tracks and stained wood moldings are also in stock. Contact your ABET representative to discuss many stocked options as well as special order items to meet the projects needs.

Additionally, ABET offers two underlayment options:

The Floor Muffler Closed cell polyolefin blend foam, .080" (2mm) thick, is an effective vapor barrier and sound deadening foam. STC (Sound Transmission Coefficient) = 50 db, IIC (Impact Insulation Class) = 52 db

Silencer+, polyethylene and polyurethane foam combination, combines a vapor barrier with an improved sound deadening foam. STC (Sound Transmission Coefficient) = 53 db, IIC (Impact Insulation Class) = 58 db with 6mm laminate flooring on a 6" concrete suspended ceiling. Thickness = 3/32"

Stair Treads:

Parqcolor Stair Treads complete the Parqcolor Gold flooring range. Produced by PL, they are an aesthetic, practical and durable solution to commercial and residential stairs. Stair Treads are produced in lengths up to 12', and can be produced to custom dimensions. Contact your ABET representative for details and lead times.

Installation Instructions:

Parqcolor Stair Treads must be completely adhered to the sub floor, with the exception of the top step, which is installed as a floated component of the Parqcolor Flooring system. Adhesion is achieved with a combination of acrylic, double stick foam tape approximately 1/8" thick, and dual-component polyurethane construction adhesive.

Be certain the subfloor is clear of debris and glue residues. Dry fit and number stairs prior to gluing. Begin fitting the top steps first and work down, allowing at least 12 hours of undisturbed curing time. To adhere; lay 3 strips of foam double stick tape approximately 1/8th inch in thickness, from front to back on the edges and center of the step. Apply 1/4" thick line of construction adhesive with 1" to 1 1/2" of separation, throughout area between the double stick tape. Place pre-cut stair tread or riser into place and apply pressure until contact is made with the double stick tape. Risers may be installed after or prior to the tread, and is the preference of the client.

Problem Solving:

Problem:

“Buckling”: The individual planks look flat, however the seams are raised.

“Buckling” is most commonly caused by a lack of expansion spacing. Although expansion space was left at installation, increased humidity with larger expanses of flooring can cause Parqcolor to expand more than the spacing that was originally left. The problem can be resolved if additional expansion spacing is immediately cut into the floor. If not repaired immediately, permanent damage, such as damaged edges or broken glue joints will result.

“Open Seams”: It is almost impossible to get all the seams to be tight during the installation.

“Open Seams” occasionally may be the result of a slightly out of square plank, called a “crooked plank.” To verify if the plank is out of square, place two planks flush to each other groove to groove. There should be no gap along the seam. If during this test you confirm planks to be out of square, discontinue the installation immediately, and contact your ABET representative for product replacement.

“Plank Separation”: The plank seam has opened.

“Plank Separation” can be the result of either two problems: Lack of adhesive during installation or the disruption of the adhesive’s curing process, resulting in a failed bond of the joint. In smaller installations or areas, glue may be re-introduced and planks pulled tight using laminate floor clamps. However, this repair depends on many factors, such as the ability to introduce sufficient glue, and may not work in all situations. Contact your ABET representative for details.

“Plank Separation” may also be caused by a lack of contraction spacing, such as flooring installed around fixed points such as pipes or floor mounted electrical outlets. A repair attempt would include cutting additional contraction spacing then re-introducing adhesive and clamping. Success is limited by the ability to introduce sufficient adhesive, and the ability of the tongue and groove to re-connect.

“Peaked Seams”: The seams of the plank are raised.

“Peaked Seams” can be caused by lack of expansion. Review the resolution suggestion under “Buckling”.

“Peaked Seams” can also be the result of excessive moisture being consistently applied to the floor. Use of excessive water during regular maintenance, could be the cause. Immediately discontinue this type of maintenance, as the core may dry and return to its normal dimension.

If a “Peaked Seam” problem occurs immediately during or after plank installation, it may be the result of foreign matter within the joint. Remove the plank, inspect the tongue and groove for damage or debris. Damage may occur to the tongues during shipping or handling of the plank or carton. This may alter the dimension of the tongue causing difficulty during plank assembly. Planks that are forced together can cause the groove to split and raise the laminate. If planks require any additional force during assembly, they should not be fitted. Contact an ABET rep for advice or assessment.

Subtle “peaks” consistently throughout a newly installed floor may merely be the result of joint swelling from moisture in the adhesive. This effect will dissipate over approximately 7 days.

“Spooning or Cupping”: The seams on all four sides of the plank are raised, and an area of flooring planks appear concave.

“Spooning or Cupping” is almost always due to higher levels of humidity on the underside of the plank than on the surface of the plank. Subtle cupping may be the result of a change in temperature, requiring heating or cooling, thereby effecting relative humidity. This may naturally resolve itself as the underside of the plank can equalize with the humidity of room.

Dramatic “Spooning or Cupping” is the cause of either flooding or hydrostatic pressure as described above. Seldom is this problem repairable, and may be reimbursed by most insurance policies.

“Finish Haze”: The finish has a haze or polish inconsistent with the rest of the floor.

“Finish Haze” may be the result of an abrasive material that has permanently affected the finish. There is no repair for this problem.

“Finish Haze” could be caused by glue residue created by improper cleanup during installation. See “Glue Removal” on page 3 of this document.

Finally, verify that cleaning agents are not leaving residues on the floors surface. Refer to maintenance.

Technical Data:

Note: Data is in addition to Euro-Norms shown in literature and www.Parqcolor.com

Critical Radiant Flux of Floor Covering Sys:

ASTM E648-94a Result: Class I Interior floor finish

Static Coefficient of friction:

Testing Performed **Standard: ADA**

Component	Test	Method #	ADA Standard	Result	Comment
High Pressure Laminate Flooring (Dry)	SCOF	ASTM C1028-96	0.60 SCOF	0.78 SCOF	Pass
High Pressure Laminate Flooring (Wet)	SCOF	ASTM C1028-96	0.60 SCOF	0.66 SCOF	Pass

Comments: Neolite Rubber was used as the heel contact.

Final Evaluation: Meets ADA standard.

Know your data:

All data is not created equal. Verify test procedures before comparing technical data. For example, wear is tested using the “Taber Abrasion” test. However, the specifics of how the test is conducted and measured can be very different as described below:

- NALFA - change abrasive every 200 cycles (Same as EN 13329)
- run to NALFA Initial point = 0.6mm2 wear through in 3 quadrants
- run 2 replicates & average (adjusted by calibration factor)

- NEMA - change abrasive every 500 cycles
- run to NEMA Initial point = wear through just noticeable in 4 quadrants
- run to NEMA Final point = removal of decorative pattern/color in full wear path
- run 3 replicates
- average and calculate adjusted values.

To learn more visit www.meadspecialty.com

Specification:

Flooring shall be: Parqcolor Gold, or Parqcolor Chromatic, or Parqcolor Vintage, or Parqcolor Fiber, or Parqwood
 Manufactured by: PL, ABET group
 Offered by: ABET, Inc.
 800-228-2238
www.abetlaminati.com
 60 West Sheffield Avenue
 Englewood, NJ 07631

Color Reference #: _____

Underlayment: The Floor Muffler, or Silencer+

Transitions: _____

Adhesive: PL brand, Parqcolor PVA adhesive

ABET LAMINATI

TECHNICAL DATA

Parqcolor Flooring 8.0 mm High Pressure Laminate Flooring R605

Manufacturer: PL, ABET

Offered by:

ABET INC

60 West Sheffield Ave.

Englewood, NJ 07631

Telephone: (201) 541-0700 or (800) 228-2238

Fax: (201) 541-0701

Web Site: www.abetlaminati.com

PRODUCT DESCRIPTION

Basic Uses: ABET LAMINATI Parqcolor flooring is a high pressure laminate plank flooring system engineered for commercial flooring applications. It sustains intense foot traffic, resists heavy impact loads, and resists most staining and chemical agents. Parqcolor flooring is designed for floating floor applications.

Parqcolor high pressure laminate flooring has these outstanding properties compared to a direct pressure laminate flooring:

- Better wear resistance since high pressure flooring laminates are molded at 1000psi pressure versus 300 to 500 psi pressure for direct pressure laminate flooring
- Better load properties because of the thicker surface laminate
- Better edge resistance properties because of a thicker laminate surface
- Better heat resistance due to the surface laminate's insulating properties
- Better impact resistance resulting from an 0.028" surface compared to the 0.007" - 0.0010" surface on direct pressure laminate flooring

Composition: ABET LAMINATI Parqcolor flooring has a 0.7 mm thick high pressure laminate surface bonded to a 6.3 mm (1/4" nominal) moisture resistant high density fiberboard core and a balancing 0.7 mm thick phenolic high pressure laminate backer.

Limitations: As with any product, proper installation procedures must be used and the installer must understand potential problems.

Color and Pattern: ABET LAMINATI Parqcolor flooring is offered in over 80 colors and patterns. Others may be produced on a special order basis.

Plank Dimensions: 190 mm x 1200 mm (7 7/16 inches x 47 3/16 inches nominal)

Total Thickness: 8.0 mm +/- 0.3 mm (5/16 inch nominal)

Packaged: 8 planks per box or 1.82 square meters (19.63 square feet)

Weight: 1.7 lb/sq. ft.

TECHNICAL DATA

ABET LAMINATI Parqcolor laminate flooring meets all the requirements of European Standard EN 13329: Commercial Class 4

TECHNICAL DATA SHEET

Test Method	EN 13329 Requirements	Parqcolor Laminate Flooring
Thickness	N/A	8.0 mm (0.33")
Abrasion Resistance EN13329 Annex E NEMA LD-3-2000	AC4 >4000 revolutions N/A	AC4 >4000 revolutions >10,000 revolutions
Thickness Swelling EN 13329 Annex G	<18 %	6.50%
Impact Resistance EN13329 Annex F	IC 2	IC 3
Stain Resistance EN 438-2.15 Groups 1 and 2 Groups 3 and 4	Grade = 5 Grade = 4	Grade = 5 Grade > 4
Light Stability ISO 105 Blue Scale B02 EN 20105 Gray Scale A02	Min 6 Min 4	> 6 > 4
Resistance to Cigarette Burn EN 438 - 2.18	Grade 4	> Grade 4
Residual Mark After Static Load EN 433	No visible change	No visible change.
Effect of Caster Chair EN 425 with EN12529	No visible damage	No visible damage
Effect of Movement of Furniture Leg EN 424 with Foot Type 0	No visible damage	No visible damage
Slip Resistance ASTM F-489	N/A	0.5
Reaction to Fire UNI 8457	N/A	Class 1
Surface Electrical Resistance NFPA 99 on full plank	N/A	1 x 10 power 8 - ohms 1 x 10 power 11 - ohms

CONDITIONING AND INSTALLATION

Conditioning:

Parqcolor laminate flooring must acclimate to the installation environment with its plastic packaging removed for approximately 48 hours. Room conditions must be maintained within 40% to 60% relative humidity and 60 degrees F to 80 degrees F temperature for installation.

Installation Procedures:

ABET's Parqcolor Installation Guide must be used. The success ultimately depends on the environment in which the product is installed and the installation process itself. ABET, Inc. cannot stress enough, the importance of proper installation knowledge and preparation. It is vital to assess each installation independently, understanding potential problems associated with the buildup and movement of humidity and moisture within the building and from the subfloor.

TRANSPORTATION AND STORAGE

ABET, Inc. Parqcolor Laminate flooring should always be shipped and stored on flat stable pallets.

MAINTENANCE AND CARE

One of the best features of laminate flooring is the lack of maintenance required to keep a beautiful and clean floor. Primarily, sweeping and vacuuming, with an occasional damp mopping with an ammonia or vinegar (acetic acid) and water mixture will be necessary. Difficult to remove stains can be cleaned with either acetone, isopropyl alcohol or mineral spirits.

Do not use excessive amounts of water or allow water to stand on the floor.

Do not wax, polish or buff Parqcolor flooring.

Do not use mechanical floor cleaners, abrasive pads, scouring powders, or cleaners as they may permanently dull or scratch the laminate surface making it susceptible to staining. Harsh chemicals such as toilet cleaner, drain cleaner, oven cleaners, acids or strong alkali chemicals may etch or discolor the surface.

Accessories for Flooring System

ABET, Inc.



Transition or "T" Moldings:

To transition from Parqcolor to Parqcolor, or similar thickness material, allowing for expansion and contraction.



Laminate covered Aluminum "T" & Base Track

Description: Laminate covered aluminum Transition molding with aluminum base track. For commercial applications.

Dimensions: 1.5 inches wide x 8.8 feet long.

Height from floor surface: .09 inch

Installation method: Secure base track to sub floor via adhesive (construction). Lay underlayment up to base track and not within. Maintain expansion space for floor. Press T into track by cautiously stepping on decorative.

Order Code: "T" - *TM & Color #, Base track - *N28 (sold seperately)



Aluminum "T" & Base Track

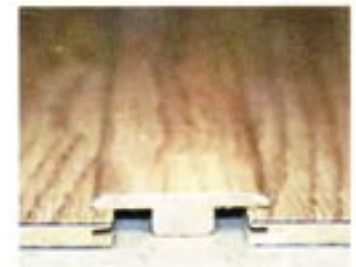
Description: Aluminum Transition in satin finish, with aluminum base track. For commercial applications.

Dimensions: 1.5 inches wide x 9.8 feet long.

Height from floor surface: .08 inch

Installation method: Secure base track to sub floor via adhesive (construction). Lay underlayment up to base track and not within. Maintain expansion space for floor. Press T into track by cautiously stepping on decorative.

Order Code: "T" - *N38, Base track - *T (sold seperately)



MDF Transition "T"

Description: Medium Density fiber board Transition, covered with Low Pressure Decorative Laminate to match flooring décor. For residential or light traffic applications.

Dimensions: 1.75 inches wide x 7 feet long.

Height from floor surface: .2 inch

Installation method: Place 1/4 inch bead of construction adhesive on 1/2 inch lower portion of MDF. Secure molding directly to the subfloor. Do not use excessive adhesive that might overflow and adhere to the Parqcolor.

Order Code: *363 & Color #

Accessories for Flooring System

Reducer Moldings:

To reduce from Parqcolor to low profile materials such as vinyl, carpet, or to the subfloor, allowing for Parqcolor expansion and contraction.



Laminate covered Aluminum Reducer & Base Track

Description: Laminate covered aluminum Transition molding with aluminum base track. For commercial applications.

Dimensions: 1.6 inches wide x 8.8 feet long.

Height from floor surface: .1 inch

Installation method: Secure base track to sub floor via adhesive (construction). Lay underlayment up to base track and not within. Maintain expansion space for floor. Press Reducer into track by cautiously stepping on decorative.

Order Code: "Reducer" - *RM & Color #, Base track - *N28 (sold Separately)



Aluminum Reducer & Base Track

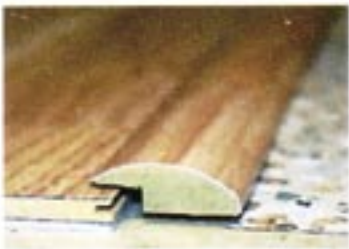
Description: Aluminum Transition in satin finish, with aluminum base track. For commercial applications.

Dimensions: 1.5 inches wide x 9.8 feet long.

Height from floor surface: .08 inch

Installation method: Secure base track to sub floor via adhesive (construction). Lay underlayment up to base track and not within. Maintain expansion space for floor. Press T into track by cautiously stepping on decorative.

Order Code: Reducer- *N44 (previously *M35), Base track - *T (previously *M30), (sold separately)



MDF Reducer

Description: Medium Density fiber board Reducer, covered with Low Pressure Decorative Laminate to match flooring décor. For residential or light traffic applications.

Dimensions: 1.5 inches wide x 7 feet long.

Height from floor surface: .25 inch

Installation method: Place 1/4 inch bead of construction adhesive on 1/2 inch lower portion of MDF. Secure molding directly to the subfloor. Do not use excessive adhesive that might overflow and adhere to the Parqcolor.

Order Code: *362 & Color #

Accessories for Flooring System

End Profiles:

To transition to similar thickness materials such as ceramic or carpet. Commonly used at slider doors and glass partition walls. End moldings can be an alternative to Base or Quarter Round moldings at a wall.



Laminate covered Aluminum End & Base Track

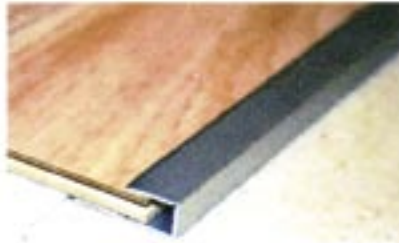
Description: Laminate covered aluminum End molding with aluminum base track. For commercial applications.

Dimensions: 1.1 inches wide x 8.8 feet long.

Height from floor surface: .1 inch

Installation method: Secure base track to sub floor via adhesive (construction). Lay underlayment up to base track and not within. Maintain expansion space for floor. Press End into track by cautiously stepping on decorative.

Order Code: End - *CM & Color #, Base track - *T11 (sold separately)



Aluminum End, or "J" Channel

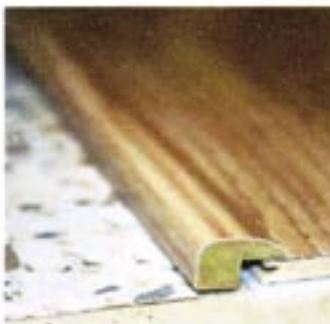
Description: Aluminum End in satin finish, ideal for slider doors, or to transition to carpet. For commercial applications.

Dimensions: .5 inches wide x 9.8 feet long.

Height from floor surface: .08 inch

Installation method: Secure base of "J" to sub floor via adhesive (construction) or use double sided carpet tape. Lay underlayment up to base track and not within. Maintain expansion space for floor.

Order Code: End / J *N50



MDF End, or Square Nose

Description: Medium Density fiber board End, covered with Low Pressure Decorative Laminate to match flooring décor. For residential or light traffic applications.

Dimensions: .75 inch wide x 7 feet long.

Height from floor surface: .25 inch

Installation method: Place 1/4 inch bead of construction adhesive on 1/2 inch lower portion of MDF. Secure molding directly to the subfloor. Do not use excessive adhesive that might overflow and adhere to the Parqcolor.

Order Code: End *361 & Color #

Accessories for Flooring System

Quarter Round Molding:

Used to conceal expansion spacing at fixed points such as cabinetry, etc. Added to existing base molding, to allow for overall floor movement.



Quarter Round

Description: Laminate covered MDF or Wood stained to Match flooring decor.

Dimensions: .75 x .75 inch high and deep x 7 feet long.

Installation method: Secure quarter round to vertical surface such as base molding or cabinet via finish nail.

Order Code: *364 & Color #

Stair Tread and Stair Nose:

For a complete stair tread system, or nosing to finish the edge of a riser.



Stair Tread to Match All Parqcolor Gold Decors

Description: Preformed flooring panel for horizontal stair treads and risers, with groove at end to integrate with additional flooring planks.

Dimensions: 4 feet long (Up to 12 feet available) x 13.75 inches deep.

Installation Method: To adhere; lay 3 strips of foam double stick tape, from front to back on the edges and center of the step. Apply 1/4" thick line of construction adhesive with 1" to 1 1/2" of separation, throughout area between the double stick tape. Place pre-cut stair tread or riser into place and apply pressure until contact is made with the double stick tape. Risers may be installed after or prior to the tread, and is the preference of the client.

Order Code: Verify stock prior to order. Some colors require additional lead times.

*451 & Color # and length dimension (4 foot standard) Note: Available in Parqcolor Gold Only

Accessories for Flooring System

Glue and Underlayments:



Parqcolor Adhesive and Underlayment

Parqcolor PVAc Wood Glue: Order Code *110

Plan adhesive coverage of 150 to 180 square feet. Proper glue application is vital to the installation. See the "Parqcolor Technical Brief" for more information.

The Floor Muffler: Order Code *C

Closed cell polyolefin blend foam, is an effective vapor barrier and sound deadening foam. STC (Sound Transmission Coefficient) = 50 db, IIC (Impact Insulation Class) = 52 db Dimensions: 40" wide x 30' feet long x .08 inch thick. Sold as 100 square foot rolls.

Upgrade Sound Barrier- Silencer +: Order Code *Q

Brown in color. Silencer + is a polyethylene and polyurethane foam combination, combining a vapor barrier with an improved sound deadening foam. STC (Sound Transmission Coefficient) = 53 db, IIC (Impact Insulation Class) = 58 db with 6mm laminate flooring on a 6" concrete suspended ceiling. Dimensions: 3 feet wide x 33.4 feet long x .1 inch thick. Sold by the 100 square foot roll.

Parqcolor Repair Kit: To fill chips in laminate surface.



Parqcolor Repair Kit

A hard wax kit including complete color range to mix and match any Parqcolor, a propane iron, and trimming block. An excellent tool to conceal accidental impact damages.

Call for Price and availability

Order Code: *I 11

Parqcolor Gold, Microline, Vintage, Chromatic, Fiber and Parqwood

Limited

10 YEAR COMMERCIAL / LIFETIME RESIDENTIAL Parqcolor Expo Limited 5 year commercial / 30 year residential WEAR, STAIN, FADE, and Factory Defect WARRANTY

ABET, Inc. warrants Parqcolor Gold, Microline, Vintage, Chromatic, Fiber and Parqwood laminate flooring for 10 years in general traffic commercial and lifetime in residential installations. Parqcolor Expo is warranted for 5 years in general traffic commercial and 30 years in residential installations from the date of purchase that:

1. The decorative laminate surface **will not wear** through.
2. The floor **will not fade** due to exposure to sun or electrical light. (Fade warranty does not apply to Parqwood.)
3. The floor **will not stain**.

This limited warranty is made subject to the following conditions:

- The flooring must be used only indoors in general traffic Commercial² or Residential areas and is installed and used in accordance with the instructions that accompany this product.

- The surface wear must not have occurred as a result of incorrect maintenance or accidents such as damage caused by scratching, impact, or cutting, usually caused by, but not limited to, the movement of furniture or appliances.

- The surface wear must be readily visible (i.e. approximately 1 square inch).

- Parqcolor's under-lay and adhesive are used correctly throughout the system.

Any claim for warranty shall be made in writing within 30 days after it has been detected, and sent to the following address:

ABET, Inc. • Parqcolor Claims • 4100 N. Powerline Road S-3 • Pompano Beach, FL 33073

In addition to the Limited Warranty, ABET, Inc. warrants its product against manufacturing defects that exist in its product prior to shipment. ABET, Inc. will replace any such defective material at no additional cost to the customer. Any damage that occurs during is the responsibility of shipping company, and must be rejected at delivery.

If ABET, Inc. accepts the claim under the Warranty, it will repair or replace, at its option, the affected flooring material. This warranty covers the repair or replacement of defective materials only. It does not cover labor costs. If the original design is no longer available, ABET, Inc. will replace the defective flooring material with a design of equal value. The described remedy is the customer's sole and exclusive remedy for claims under this warranty.

This Warranty is non-transferable. A copy of the original invoice must be submitted along with a claim.

"Lifetime," is defined by the lifetime of the floor's purchaser.

ABET, Inc. disclaims liability for incidental and consequential damages for breach of any expressed or implied warranties including any implied warranty or merchantability, or warranty of fitness for a particular purpose, with respect to this product. This warranty constitutes the entire agreement of the parties, no waiver or amendment shall be valid unless in writing and signed by an officer of ABET, Inc. Some states do not allow the exclusion or limitation of consequential damages, so the above limitation or exclusion may not apply to you. This warranty gives you the specific legal rights, and you may also have other rights, which vary state to state.

TECHNICAL SERVICE

For samples, literature, and technical assistance, call our toll-free line 800-228-2238 from 8:30AM to

²ABET Inc. designates "General Traffic Commercial" as in accordance with the Euro-Norm 13329 classification AC4. Examples of appropriate environments: offices, waiting rooms, hotel lobbies, and boutiques.