

How to install Parqcolor® flooring

IT IS EXTREMELY IMPORTANT TO READ THESE INSTRUCTIONS BEFORE INSTALLING FLOORING

FLOATING INSTALLATION

Parqcolor® Click must not be glued. The tongue-and-groove plank locking mechanism keeps it in position. To avoid any tension between planks, store packages for 48 hours in the room where Parqcolor® Click will be installed, after having removed the polyethylene protection. Store the boxes horizontally, leaving a gap between them. The relative humidity of the room must be between 40 and 60%. It is important to keep this relative humidity also after the flooring installation.

FLOOR CHECKING AND TREATING

It is important that the sub-floor is even and flat. If particularly uneven, the floor should be sanded or filled with appropriate levelling compounds. The floor must be completely dry (*see table*).

Floor	Method	Max. humidity index
Cement floor	MC*	2,50%
Cement floor with radiant panels	MC	2,00%
Anhydride	MC	0,50%
Anhydride with radiant panels	MC	0,30%
Magnesium, chipboard, concrete	Gann/Electr.	7,00%
Wooden floor	Gann/Electr.	7,00 - 12,00%
Water-repellent chipboard	Gann/Electr.	6,00 - 9,00 %

*MC = magnesium carbide

It is necessary to place a suitable underlay between Parqcolor® Click and the underlying floor. This will act as a "moisture barrier" and as sound insulation. It should be made of a closed-cell polyethylene foam and combined with a polyethylene sheet, with a total thickness of 2.20 mm (we recommend the use of PL's polyethylene underlay Super Mousse).

It is also possible to lay the laminate on carpet tiles. In this case it is only necessary to insert a 0.12 mm polyethylene sheet which will act as a moisture barrier. For laying the laminate on a floor heated with radiant panels, the following simple rules must be scrupulously observed.

1. The heating element must be inserted at least 30 mm into the floor.
2. Before installing Parqcolor® Click, the heating system must be gradually brought up to maximum (with increments of 5°C per day) and kept at this temperature for 2 weeks. Before laying the laminate, gradually reduce the heating system temperature (5°C per day) before finally switching off, and check that the floor humidity falls within the values indicated in the table.
3. Three days after laying the flooring, switch the heating on again and bring the temperature gradually (with increments of 5°C per day) up to the required temperature.
4. After laying the flooring, temperature at floor level should never exceed 28°C.

REQUIRED EQUIPMENT

Circular saw or alternatively a hacksaw, measuring tape, hammer, square, PVC or adjustable metal spacers, plank-shaped beater.
L-shaped beater.

INSTALLATION

- Before starting the installation, check that the packages are not damaged and that the material contained therein is exactly what was ordered.
- To achieve the best appearance, it is advisable to lay the planks in the same direction as the light entering the room.
- In narrow rooms, lay the planks longitudinally.
- Parqcolor® Click moves like a wooden floor. We therefore recommend never to exceed 8 linear metres (315 1/16 in and 15 lm for the Vintage Collection range) without using an expansion joint. A space of at least 8 mm (5/16 in) should be left between the floor and the wall or other obstacles (pillars, jambs, etc. and 15 mm for the Vintage Collection range). It is also important not to fix the planks with screws or nails. If it is necessary to fix the planks permanently, create a hole around the screw or nail to allow for floor expansion.
- The information supplied here is drawn from the experience acquired by PL S.p.A. Because the company does not do installations, it will not be responsible for any claims regarding the laying of the flooring, except for claims dealing with the technical features of the product.

TIPS FOR PERFECT MAINTENANCE

DAILY CLEANING

Vacuum cleaner, broom or antistatic cloth.

REGULAR CLEANING

Mild detergent (non-abrasive domestic creamy detergents, ammonia, methylated spirit) mixed with water.
The detergent Parqcolor® Cleaning is also available.

NOTE: Always use a damp cloth, never wet.

DIFFICULT STAINS

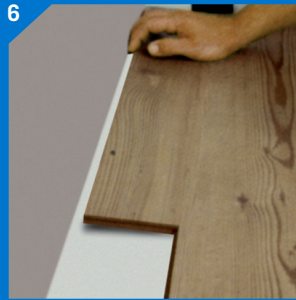
- Tar, ink, shoe polish, lipstick, nail polish, etc.: use a clean soft cloth moistened with nail-polish remover (acetone), methylated spirit or other domestic solvent.
- Chewing gum, candle wax, etc.: leave to get completely hard, then gently scrape it off.

DO NOT USE

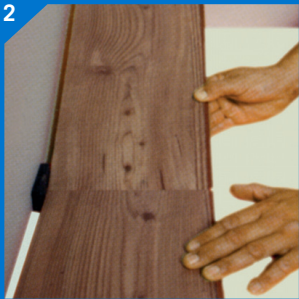
- Abrasive sponges, abrasive detergents, floor waxes and polishes, soapy detergents, water in excess.



1- Do not lay Parqcolor® Click directly on the existing floor and always make sure that the under floor is clean, smooth and dry. Insulate with a suitable underlay (we recommend our Super Mousse). Overlay the edges of adjacent sheets, sealing with silicone or water-repellent tape. Make sure that the mat overlaps the walls by at least 3 cm (1 2/16 in).



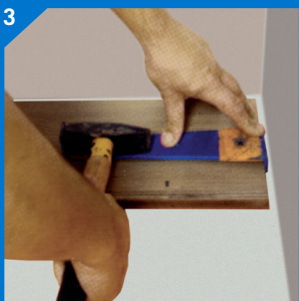
6- Place the closing plank, previously cut to size, leaving an expansion gap, eventually with the help of the L-shaped beater. (see photo no. 3).



2- Place the first plank starting from left to right, with the tongued edge facing the wall, after having removed the projecting HDF part. Insert the spacers to create an expansion gap. The planks must be fixed together, raising them of about 30°.



10- To cut the planks, use a hacksaw and always leave the appropriate expansion gaps.



3- To cut to size the final plank of each row, place it in such a way that grooved edges are facing each other. For its insertion, use the L-shaped beater. The remaining part of the plank will be used as the starting plank for the following row. Make sure that planks are staggered by at least 30 cm (11 12/16 in).



11- To obtain best results when laying Parqcolor® Click, cut door jambs with a graduated circular saw so as to create the space needed to insert the planks.



4- To start the second row, insert the remaining plank, inclining it of about 30°.



12- For surfaces with sides over 8 linear metres (315 1/16 in), and 15 lm for the Vintage Collection suitable expansion joints must be used to allow for the natural movement of the product. CAUTION: The floors of adjoining rooms, corridors, lounges, etc. must be separated by expansion joints.



5- To place the second plank, insert first the short side (see photo no. 2), then insert the long side, raising slightly the row. (or insert first the long side and then embed the short side by the beater).